

Stem Position	Port 1	Port 2
In	Open	Closed
Out	Closed	Open
Mid	Open	Open

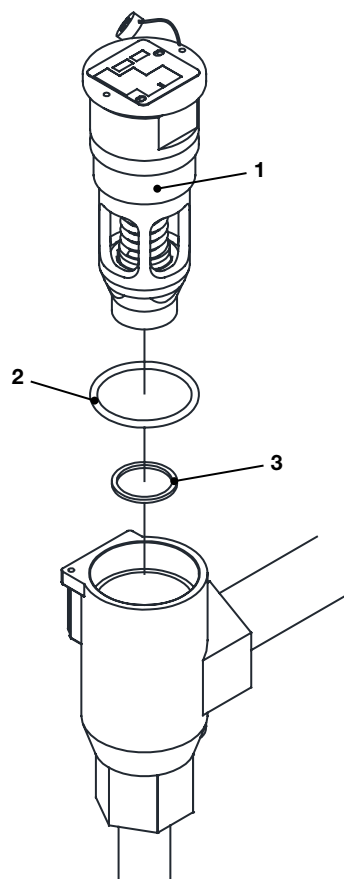
Table 4: M1 Manifold Stem Position

2. Remove the cartridge from the body by using the wrench flat on the cartridge as show in Figure 3. It may be necessary to hold the valve body while removing the cartridge to prevent the body from unthreading from the pipe.

Do not unscrew the cartridge completely. Crack it enough to allow the trapped ammonia vapor, if any, to escape through the threads. After a few minutes the cartridge can be safely removed.

- Remove the gasket from the bottom of the safety relief body and clean any remaining debris from the gasket and O-ring bore surface.
- Apply a light coating of O-ring grease to the cartridge O-ring before sliding it onto the cartridge. If necessary, reapply after the O-ring has been properly positioned on the cartridge. This will help prevent tearing during the installation and ensure a good seal.
- Place the new gasket at the base of the safety relief valve body.
- Apply a light coat of nickel based anti-seize compound to the cartridge threads before installation. The recommended torque value for adequate sealing of the body to cartridge joint is 61-67 Nm (40-50 ft-lb).

Parts Kit Reference



CSR & CSRH Parts Kit Reference											
Item	Description	Kit Description	Kit								
			CSR1	CSR2	CSR3	CSR4	CSRH1	CSRH2	CSRH3	CSRH4	CSRH5
1	Cartridge Assembly	Cartridge Assembly									
		150 psig	209801	209807	210193	210199	209783	209789	209795	210205	210210
		200 psig	209802	209808	210194	210200	209784	209790	209796	210206	210211
		250 psig	209803	209809	210195	210201	209785	209791	209797	210207	210212
		300 psig	209804	209810	210196	210202	209786	209792	209798	210208	210213
		350 psig	209805	209811	210197	210203	209787	209793	209799	210209	210214
2	O-Ring	250 psig	209806	209812	210198	210204	209788	209794	209800	—	—
3	Gasket, Cartridge	300 psig									
		400 psig									

For non-standard setting please consult factory for cartridge kit.